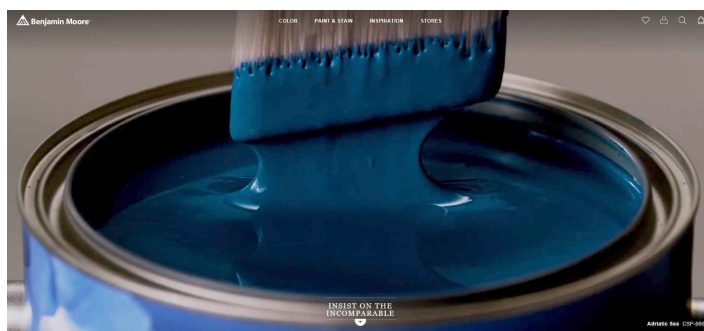


# Benjamin Moore & Co. Moore's COLOR<sub>x</sub>® System Release Notes & Installation Guide Version 6.37.4000



This new COLOR<sub>x</sub> release contains the following changes to COLOR<sub>x</sub>

## **Fresh Start or Color Foundation choice for Aura interior finishes (U.S. & Canada)**

You can now use the Fresh Start 046 / K046 primer or the Aura Color Foundation 521 / K521 when choosing a Benjamin Moore color which recommends a primer in an Aura interior finish.

Colors that require a deep base primer to achieve the color will bring up a message in COLOR<sub>x</sub>, allowing you to choose either the Benjamin Moore Fresh Start primer or the Aura Color Foundation.

When the choice you make is displayed, you can print and dispense the primer.

See page 2 for details.

## **New Dual Tint Products**

The products listed below are now available and can be tinted with Gennex or Color Preview colorants

INSL-X Cabinet Coat CC55 Satin - U.S. & Canada

INSL-X Cabinet Coat CC56 Semi-gloss - U.S. only

INSL-X Tough Shield CTS31 - U.S. only

See page 3 for the details

## **Next Gen Aura interior products**

Prescriptions and color matching capability now available for N522, N524, N526, N528 in the U.S.

Prescriptions and color matching capability now available for F522, F524, F526, F528 in Canada

## **BYK Auto Match IV spectrophotometer support for Windows 10 computers**

This release of COLOR<sub>x</sub> now supports the BYK Auto Match IV - 0/45 geometry spectrophotometer.

**This spectrophotometer is supported only for computers running Windows 10.**

## **National Accounts Colors Added**

Colors for: Calvin Klein; Edible Arrangements; Extra Mile; Fossil; TJ Max; Tommy Hilfiger; Walmart

## **Benjamin Moore Prescriptions**

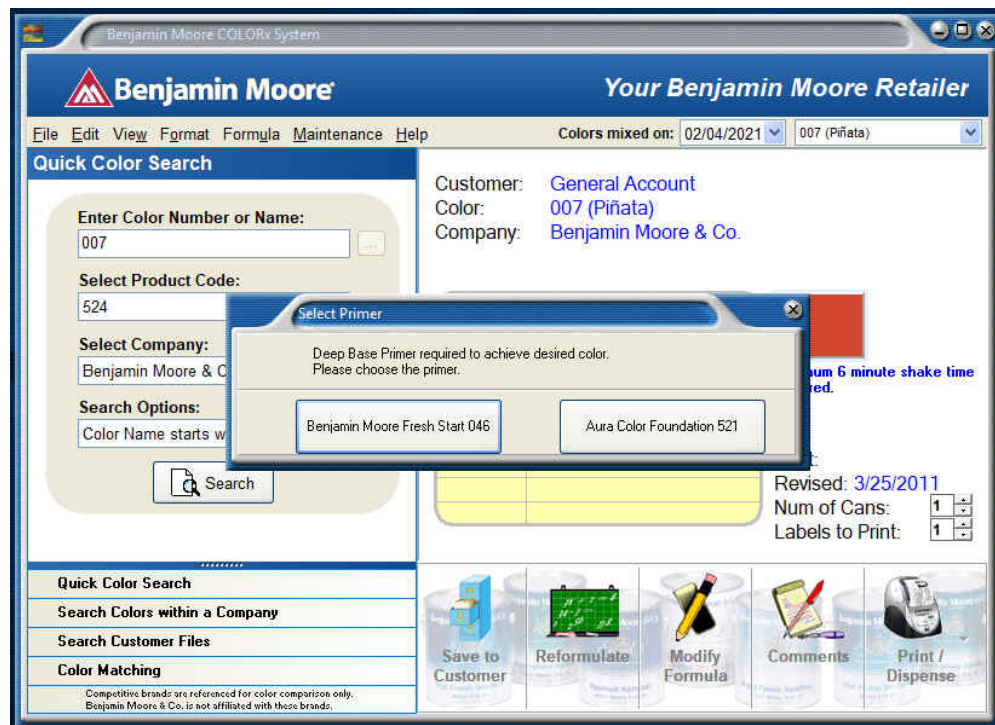
For the complete list of updated prescriptions, see page 5.

## Fresh Start 046 / K046 or Color Foundation 521 / K521 choice for Aura interior finishes

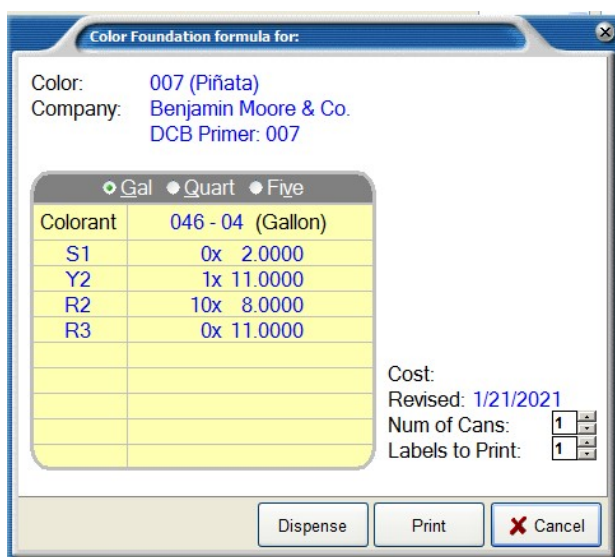
When accessing a Benjamin Moore color in an Aura interior finish which recommends using a deep base primer, a new message will appear on the screen.

You now have the choice of picking the primer you wish to use.

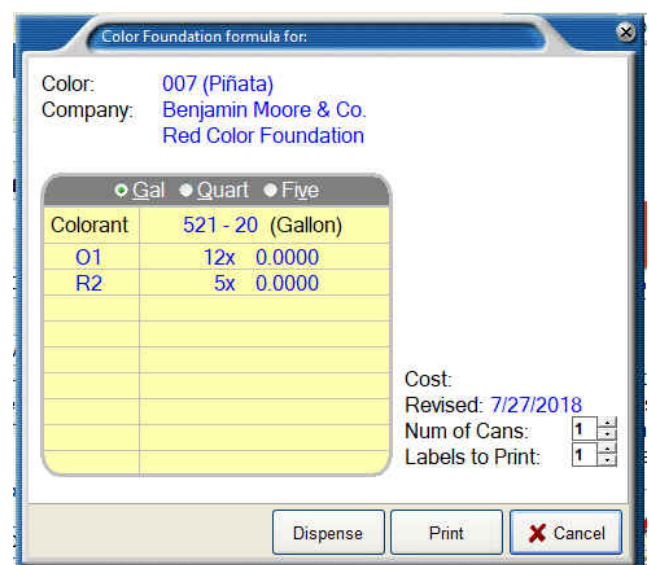
The Benjamin Moore Fresh Start (046 U.S. / K046 Canada), or the Aura Color Foundation (521 U.S / K521 Canada.)



Simply click on the button of the primer you wish to display.



Or



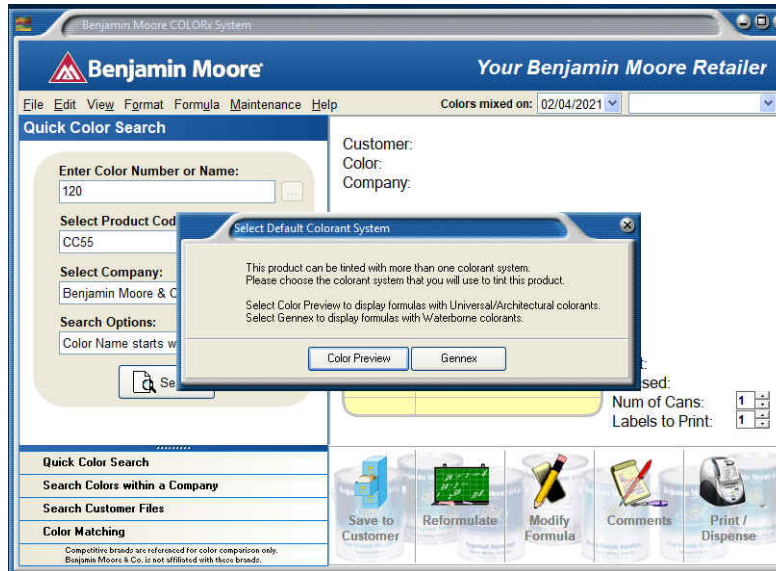
The displayed primer can now be dispensed, printed, or canceled.

## New Dual Tint Products (Gennex or Color Preview colorants)

INSL-X Cabinet Coat CC55 and CC56 (U.S. only) / INSL-X Tough Shield CTS31 (U.S. only) can now be tinted with Color Preview or Gennex colorants.

COLORx will give you the proper prescriptions and custom formulas for the system you choose.

When you look up a prescription or perform a custom color match for the first time in Cabinet Coat CC55, CC56, or CTS31, you will be prompted to choose which colorant system you want to use. As shown below.

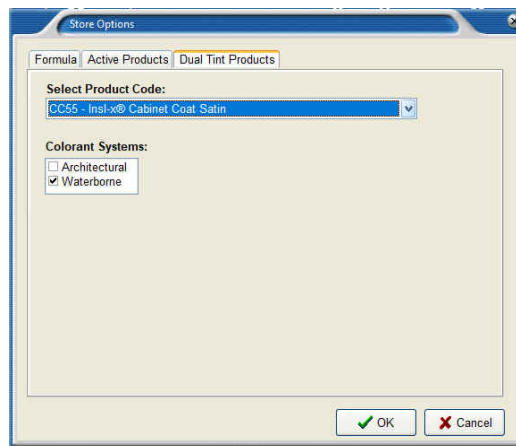


Click on the button (Color Preview or Gennex) to choose which system to use.

After you choose the colorant system for the product, you will no longer be prompted to choose when looking up colors in that product again.

However, you will be able to change the colorant system to use if you wish to.

Simply choose the **File** dropdown on the main COLORx menu and choose **Modify Store Options**. Then click on the **Dual Tint Products** tab as shown below. Select the **Select Product Code** dropdown to choose the colorant system.



Now check the colorant system you wish to activate, and then uncheck the other system. Now click on OK. You will not be prompted to choose the colorant system when you look up colors or do custom matching matches in that product

### **Note for Cabinet Coat using Gennex Colorants:**

Colors in CC55 & CC56 are only available in 1 base & 2 base colors when using Gennex colorants. Colors in all four bases are available when using Color Preview colorants.

## **COLORx Help**

While in the COLOR<sub>x</sub> application, you can view the Operator's Manual and the Quick Start Guide by clicking on Help, then choose COLOR<sub>x</sub> Help for the manual or COLOR<sub>x</sub> Quick Start.

## **Best Practices for Custom Color Matching and Competitive Company Colors**

Always save and store custom matched color formulas and competitive company formulas made for your customers in the Customer File database in COLOR<sub>x</sub>. This will assure that you have the exact formula that the customer previously purchased.

We routinely update our calibration database files to improve our color matching capabilities, which may alter the original formula.

Following this procedure will allow the customer to purchase the same formula in the event that they return to purchase more of this color for touch up.

## **Competitive Color Prescriptions**

We have amassed an extensive collection of colors from competitor's color merchandise. This information is available in our Color Search option in COLOR<sub>x</sub>. To see if a color exists, simply follow the same procedure you would for a Benjamin Moore color. Enter a color number or name, along with a product, and either select an individual company or check the "Search All" box above the "Select Company" drop down list. (See the Operator's Manual for more details.)

Unlike a Benjamin Moore color that displays a prescription created and approved by our Color Prescribing Lab, we store the measurement of the competitive color. The measurement is calculated in our color matching application to generate a color prescription the same as if you measured a custom color with a spectrophotometer.

When a customer requests a match to a competitive color, you should follow this procedure. First, look up the color in COLOR<sub>x</sub> and determine if we have it in our system. If it is, a prescription will be calculated and displayed. Click on the button "Closest BM Color", this will list the five closest Benjamin Moore colors. Suggest to the customer that they look at our closest colors and see if that meets their color requirements. This has two benefits. If the color is acceptable, then you have a tested Benjamin Moore prescription to make the color and you have changed a competitive color specification to a Benjamin Moore color specification.

Second, if you or the customer has a sample of the competitive color merchandise then match the color merchandise just as you would match a custom color. Since the customer will be judging the color to the merchandise sample that should be your target. Depending on the age and condition of the merchandise, it may not represent what we have stored in COLOR<sub>x</sub>.

Finally, if the customer does not like our closest color and no sample of the color is available then use the calculated match in COLOR<sub>x</sub>.

If you have any questions, please contact our Color Technology Representatives by calling 800-809-9213.

## **Prescription Changes since COLORx Version 6.37.3000 (United States)**

The following color had its prescription changed in several products: 1619. A revision date after 10/19/20 indicates a change in the prescription since COLORx version 6.37.3000.

The following product had several of its color prescriptions modified: N538. A revision date after 10/19/20 indicates a change in the prescription since COLORx version 6.37.3000.

The following color prescription has been modified for product 357: HC-35.

The following color prescriptions have been modified for product 484: 2109-40, AF-165.

The following color prescriptions have been modified for product 522: HC-181, PM-18.

The following color prescription has been modified for product 524: AF-555.

The following color prescriptions have been modified for products 147, 148, 791, 792, 793 and N794: 2143-70, OC-117.

## **Prescription Changes since ColoRx Version 6.37.3000 (Canada)**

The following color had its prescription changed in several products: 1619. A revision date after 10/19/20 indicates a change in the prescription since ColoRx version 6.37.3000.

The following products had several of their color prescriptions modified: K538, K581. A revision date after 10/19/20 indicates a change in the prescription since ColoRx version 6.37.3000.

The following color prescription has been modified for product K357: HC-35.

The following color prescriptions have been modified for product K484: 2109-40, AF-165.

The following color prescriptions have been modified for product K522: HC-181, PM-18.

The following color prescription has been modified for product K524: AF-555.

The following color prescriptions have been modified for products K147, K148, K791, K792, K793 and F794: 2143-70, OC-117.

# Moore's COLOR<sub>x</sub>® System Installation Guide

The Benjamin Moore COLOR<sub>x</sub> Prescription Book and Color Matching System programs are incorporated into a single software package. It is available on the Benjamin Moore Retailer Portal, Mybenjaminmoore.com and runs under the Windows® XP service pack 3, Windows® 7, Windows® 8, and Windows® 10 operating systems.

## COLOR<sub>x</sub> Minimum System Requirements

- Intel Pentium® processor 1 GHz or higher.
- 2 GB of RAM
- 4 GB of free hard disk space.
- Video card capable of supporting 16M colors
- Printer
- Serial or USB port for spectrophotometer & barcode reader
- Windows® XP service pack 3, Windows® Vista, Windows® 7, Windows® 8 or Windows® 10

## X-Rite MetaVue Spectrophotometer Minimum System Requirements

- Windows 7 SP1 (32 or 64 bit)
- Windows 8/8.1 (32 or 64 bit)
- Windows 10 (32 or 64 bit)

*Windows XP and Vista are not supported for the new MetaVue Spectrophotometer*

## Installation

If you are downloading COLOR<sub>x</sub> from the Benjamin Moore Retailer Portal, mybenjaminmoore.com, read the "COLOR<sub>x</sub> Download Instructions." This will instruct you on how to download and install COLOR<sub>x</sub> on your computer.

If you don't have internet access on the computer running COLOR<sub>x</sub>, you can download the COLOR<sub>x</sub> installation file directly to a flash drive from another computer which has internet access.

To install COLOR<sub>x</sub> from a flash drive, be sure that there are no other applications running. They should be closed before attempting to install the program. If your system has any automatic virus detection software enabled, it should be disabled before installing.

Insert the flash drive into a USB port. Open Windows Explorer and click on the flash drive letter. Now click on the ColoRx6xxxxxx.exe file.

The installation procedure will automatically start and bring you to the **Welcome Screen**. The Setup Wizard will guide you through the installation.

## License Agreement

As you start the installation, the License Agreement screen appears. Be sure to read this license agreement. If you disagree with the terms of the agreement, then click on the Cancel button to exit the installation. If you agree with the terms, then check the appropriate box to continue the installation. The installation will prompt you to select the software region, United States or Canada. The default is United States.

***Note:** If you have a previous version of COLOR<sub>x</sub>® 6, this installation will not write over any stored samples or stored customers. They can still be accessed.*